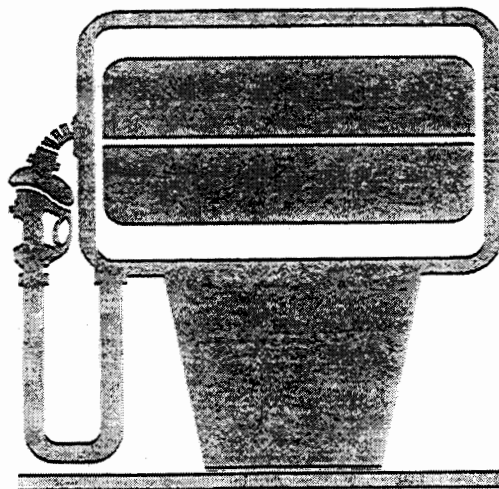


# 1990

## Gas Mileage Guide



United States  
Department of  
Energy



EPA Fuel Economy  
Estimates

October 1989

## Contents

	Page
Purpose of the Guide .....	1
Interior Volume .....	1
How the Fuel Economy Estimates Are Obtained .....	1
Factors affecting MPG .....	1
How to Use the Guide .....	2
Annual Fuel Costs .....	3
Listing of Vehicle Data .....	4-12
Index .....	13-15
Sample Fuel Economy Label .....	15

## Purpose of the Guide

The Gas Mileage Guide is published by the U.S. Department of Energy as an aid to consumers considering the purchase of a new vehicle. The Guide lists estimates of miles per gallon (mpg) for each vehicle available for the new model year. These estimates are provided by the U.S. Environmental Protection Agency in compliance with Federal Law.

This Guide is intended to help you compare the fuel economy of similarly sized cars, light duty trucks and special purpose vehicles. The vehicles listed in this Guide have been divided into three classes of cars (sedans, two-seaters, and station wagons), three classes of light duty trucks (vans, small pick-ups, and large pick-ups), and three classes of special purpose vehicles (2-wheel drive, 4-wheel drive, and cab chassis).

By using this Guide you can estimate the average yearly fuel cost for the vehicle you choose to purchase. The mileage figures included in this Guide are most useful when comparing vehicles. Your actual mileage when driving a vehicle may differ considerably from the predicted mileage.

All new car and light duty truck dealers are required to have copies of this Guide available and prominently displayed in their showrooms. The Department of Transportation is empowered to penalize dealers who fail to display the Guides as prescribed by law.

## Interior Volume

The interior volume is listed in the index for each body style (2-door, 4-door, and hatchback) except for two seaters and trucks, and is a way of estimating the space in a car. The interior volume is given as two numbers in cubic feet (for example: 87/12). The first number is an estimate of the size of the passenger compartment. This number is based on four measurements—head room, shoulder room, hip room, and leg room—for both the front and rear seats. The second number is the size of the trunk, or in station wagons and hatchbacks, the cargo space behind the second seat.

## How the Fuel Economy Estimates Are Obtained

The fuel economy estimates are based on results of tests required by the U.S. Environmental Protection Agency (EPA). These tests are used to certify that vehicles meet the Federal emissions and fuel economy standards. Manufacturers test pre-production prototypes of the new car models and submit the test results to EPA. EPA then confirms the accuracy of the figures provided by the manufacturers. The vehicles are driven by a professional driver under controlled laboratory conditions, on an instrument similar to a treadmill. These procedures ensure that each vehicle is tested under identical conditions; therefore, the results can be compared with confidence.

There are two different fuel economy estimates for each vehicle in this Guide, one for city driving and one for highway driving. To generate these two estimates, separate tests are used to represent typical everyday driving in a city and in a rural setting.

The test used to determine the *city* fuel economy estimate simulates a 7.5 mile, stop-and-go trip with an average speed of 20 mph. The trip takes 23 minutes and has 18 stops. About 18 percent of the time is spent idling, as in waiting at traffic lights or in rush hour traffic. Two kinds of engine starts are used—the cold start, which is similar to starting a car in the morning after it has been parked all night—and the hot start, similar to restarting a vehicle after it has been warmed up, driven and stopped for a short time.

The test to determine the *highway* fuel economy estimate represents a mixture of "non-city" driving. Segments corresponding to different kinds of rural roads and interstate highways are included. The test simulates a 10 mile trip and averages 48 mph. The test is run from a hot start and has very little idling time and no stops (except at the end of the test).

NOTE: To make the numbers in the Gas Mileage Guide more useful for consumers, EPA adjusts these laboratory test results to account for the difference between controlled laboratory conditions and actual driving on the road. The laboratory fuel economy results are adjusted downward to arrive at the estimates in this booklet and on the labels seen on new cars. The city estimate is lowered by 10 percent and the highway estimate by 22 percent from the laboratory test results. Experience has proven that these adjustments make the mileage estimates in this Guide correspond more closely to the actual fuel economy realized by the average driver.

## Factors Affecting MPG

No test can simulate all possible combinations of conditions, climate, driver behavior and car care habits. Your actual mileage depends on how, when, and where you drive. EPA has found that the mpg obtained by most drivers will be within a few mpg of the estimates in this booklet.

## Factors that Can Raise Fuel Economy

- Combine errands into one trip.
- Turn an engine off rather than letting it idle for more than a minute.
- Get tune-ups regularly. The car will run more smoothly and efficiently.
- Keep tires inflated to the manufacturer's recommended maximum pressure.
- The car will operate more efficiently if you anticipate traffic stops.

## Factors that Can Lower Fuel Economy

- Jackrabbit starts waste fuel.
- Fuel economy is lowered at higher speeds. Traveling at 65 mph instead of 55 mph lowers fuel economy over 15 percent.
- Carrying unnecessary weight in the vehicle wastes fuel.
- Revving the engine before it is shut off is not necessary for today's cars and will just use more fuel.
- A car with the front wheels out of alignment will use more fuel.

**MID-SIZE STATION WAGONS  
(cont'd)**

MERCEDES-BENZ	TRANS	CITY	HWY	ENG/CYL	GP
300TE.....	A4	17	20	3.0/6	GP
300TE 4MATIC..	A4	16	20	3.0/6	GP

**2WD SMALL PICKUPS**

FORD	TRANS	CITY	HWY	ENG/CYL	GP
RANGER PICKUP 2WD.....	L4	17	23	4.0/6	

**4WD SMALL PICKUPS**

FORD	TRANS	CITY	HWY	ENG/CYL	GP
RANGER PICKUP 4WD.....	L4	16	20	4.0/6	

**2WD LARGE PICKUPS**

MAZDA	TRANS	CITY	HWY	ENG/CYL	GP
B2200/B2600I..	L4	20	25	2.2/4	
	M4	21	25	2.2/4	
	M5	21	26	2.2/4	
	L4	21	26	2.2/4	
	M5	24	26	2.2/4	
	L4	19	24	2.6/4	
	M5	19	23	2.6/4	

**INDEX**

MANUFACTURER CAR/TRUCK LINE	PASSENGER/CARGO VOLUMES		
	2-Door	4-Door	Hatch
ASC INC. ASC GRAND PRIX STE TURBO .....	—	99/16	—
AUSTIN ROVER GROUP LTD STERLING 827 .....	—	103/12	102/14
CADILLAC COMMERCIAL CHASSIS .....	—	—	—
CALLAWAY CARS INC. CALLAWAY TWIN-TURBO CORVETTE .....	—	—	—
CHEVROLET CAMARO .....	82/5	—	85/12
S10 BLAZER 4WD .....	—	—	—
S10 PICKUP 4WD .....	—	—	—
CHRYSLER LEBARON .....	—	089/14	—
LEBARON CONVERTIBLE .....	84/10	—	—
LEBARON LANDAU .....	—	97/14	—
NEW YORKER .....	—	100/16	—
CONSULIER INDUSTRIES INC. CONSULIER GTP .....	—	—	—
DODGE DAYTONA .....	—	—	81/17
DYNASTY .....	—	99/16	—
SPIRIT .....	—	97/14	—
EVANS AUTOMOBILES EVANS SERIES 1 .....	—	—	—
FERRARI MONDIAL T / CABRIOLET .....	81/04	—	—
348 TB/TS .....	—	—	—
FORD AEROSTAR VAN .....	—	—	—
AEROSTAR VAN ALL WHEEL DRIVE .....	—	—	—
AEROSTAR WAGON .....	—	—	—
AEROSTAR WAGON ALL WHEEL DRIVE .....	—	—	—
PROBE .....	—	—	91/12
RANGER PICKUP 2WD .....	—	—	—
RANGER PICKUP 4WD .....	—	—	—
TAURUS WAGON .....	—	100/46	—
TEMPO ALL WHEEL DRIVE .....	90/13	89/13	—
GMC S15 JIMMY 4WD .....	—	—	—
S15 PICKUP 4WD .....	—	—	—
HONDA PRELUDE .....	75/11	—	—
JAGUAR JAGUAR XJ-S CONVERTIBLE .....	—	—	—
JAGUAR XJ-S COUPE .....	77/11	—	—

**4WD LARGE PICKUPS**

CHEVROLET	TRANS	CITY	HWY	ENG/CYL
S10 PICKUP 4WD.....	L4	17	21	4.3/6

GMC	TRANS	CITY	HWY	ENG/CYL
S15 PICKUP 4WD.....	L4	17	21	4.3/6

JEEP	TRANS	CITY	HWY	ENG/CYL
COMANCHE PICKUP 4WD.....	L4	18	23	2.5/4

MAZDA	TRANS	CITY	HWY	ENG/CYL
B2600I 4X4.....	L4	17	20	2.6/4
	M5	18	20	2.6/4

**CARGO VANS**

FORD	TRANS	CITY	HWY	ENG/CYL
AEROSTAR VAN.....	L4	16	22	4.0/6

FORD	TRANS	CITY	HWY	ENG/CYL
AEROSTAR VAN ALL WHEEL DRIVE.....	L4	16	20	4.0/6

**PASSENGER VANS**

FORD	TRANS	CITY	HWY	ENG/CYL
AEROSTAR WAGON.....	L4	16	21	4.0/6

FORD	TRANS	CITY	HWY	ENG/CYL
AEROSTAR WAGON ALL WHEEL DRI.....	L4	16	20	4.0/6

**4WD SPECIAL PURPOSE**

CHEVROLET	TRANS	CITY	HWY	ENG/CYL
S10 BLAZER 4WD.....	L4	17	21	4.3/6

GMC	TRANS	CITY	HWY	ENG/CYL
S15 JIMMY 4WD.....	L4	17	21	4.3/6

**CAB CHASSIS**

CADILLAC	TRANS	CITY	HWY	ENG/CYL
COMMERCIAL CHASSIS.....	L4	15	23	4.5/8 GP

**INDEX**

MANUFACTURER CAR/TRUCK LINE	PASSENGER/CARGO VOLUMES		
	2-Door	4-Door	Hatch
JEEP COMANCHE PICKUP 4WD .....	—	—	—
LINCOLN-MERCURY SABLE WAGON .....	—	—	100/46
TOPAZ ALL WHEEL DRIVE .....	90/13	—	90/13
MAZDA B2200/B2600I .....	—	—	—
B2600I 4X4 .....	—	—	—
MX-5 MIATA .....	—	—	—
MERCEDES-BENZ 190E2.6 .....	—	—	85/12
300CE .....	82/14	—	—
300D 2.5 TURBO .....	—	—	93/15
300E .....	—	—	93/15
300E 2.6 .....	—	—	93/15
300E 4MATIC .....	—	—	93/15
300SE .....	—	—	94/15
300SEL .....	—	—	100/15
300SL .....	—	—	—
300TE .....	—	—	94/42
300TE 4MATIC .....	—	—	94/42
350SDL TURBO .....	—	—	100/15
420SEL .....	—	—	100/15
500SL .....	—	—	—
560SEC .....	88/15	—	—
560SEL .....	—	—	100/15
OLDSMOBILE CUTLASS CALAIS .....	91/13	90/13	—
CUTLASS SUPREME .....	98/14	100/15	—
PLYMOUTH ACCLAIM .....	—	—	97/14
PONTIAC FIREBIRD/TRANS AM .....	—	—	85/12
GRAND AM .....	91/13	90/13	—
GRAND PRIX .....	95/15	100/16	—
SUNBIRD CONVERTIBLE .....	78/10	—	—
PORSCHE 911 CARRERA 4/2 .....	55/4	—	—
SAAB SAAB 900 .....	—	89/14	88/22
SAAB 9000 .....	—	103/18	103/24
SALEEN AUTOSPORTS INC SALEEN SSC .....	—	—	96/12
SUBARU LEGACY .....	—	90/14	—
LEGACY WAGON .....	—	92/36	—
LEGACY 4WD .....	—	90/14	—
SUZUKI SWIFT .....	—	—	82/10
YUGO AMERICA, INC. YUGO GV PLUS/GV/CABRIO .....	—	—	80/06

# 1990 50-State-Fuel Economy Guide

(Models Added or Changed Since First Edition of Guide)

## TWO SEATERS

### CALLAWAY CARS INC.

	TRANS	CITY	HWY	ENG/CYL	
CALLAWAY TWIN-TURBO					
CORVETTE.....	M6	14	21	5.7/8	TG

### CONSULIER INDUSTRIES INC.

CONSULIER GTP	M5	21	27	2.2/4	T
---------------	----	----	----	-------	---

### EVANS AUTOMOBILES

EVANS SERIES 1.....	M5	19	26	5.7/8	
---------------------	----	----	----	-------	--

### FERRARI

348 TB/TS.....	M5	13	19	3.4/8	GP
----------------	----	----	----	-------	----

### JAGUAR

JAGUAR XJ-S CONVERTIBLE....	A3	13	17	5.3/12	GP
-----------------------------	----	----	----	--------	----

### MAZDA

MX-5 MIATA.....	L4	24	28	1.6/4	
-----------------	----	----	----	-------	--

### MERCEDES-BENZ

300SL.....	A5	16	22	3.0/6	GP
	M5	15	21	3.0/6	GP
500SL.....	A4	14	18	5.0/8	GP

## MINICOMPACT CARS

### PORSCHE

911 CARRERA 4/2.....	S4	16	22	3.6/6	GP
----------------------	----	----	----	-------	----

## SUBCOMPACT CARS

### CHEVROLET

CAMARO.....	M5	16	26	3.1/6	
-------------	----	----	----	-------	--

### CHRYSLER

LEBARON CONVERTIBLE....	L4	19	26	3.0/6	
-------------------------	----	----	----	-------	--

### DODGE

DAYTONA.....	L4	19	26	3.0/6	
--------------	----	----	----	-------	--

### FERRARI

MONDIAL T / CABRIOLET.....	M5	12	17	3.4/8	GP
----------------------------	----	----	----	-------	----

### HONDA

PRELUDE.....	L4	20	26	2.0/4	
	M5	22	27	2.0/4	
	L4	22	27	2.0/4	
	M5	23	27	2.0/4	
	L4	21	25	2.1/4	
	M5	22	26	2.1/4	

### JAGUAR

JAGUAR XJ-S COUPE.....	A3	13	18	5.3/12	GP
------------------------	----	----	----	--------	----

## SUBCOMPACT CARS (cont'd)

### MERCEDES-BENZ

	TRANS	CITY	HWY	ENG/CYL	
190E2.6.....	A4	19	23	2.6/6	P
	M5	19	27	2.6/6	P
300CE.....	A4	17	21	3.0/6	GP

### PONTIAC

FIREBIRD/TRANS AM.....	M5	16	26	3.1/6	
------------------------	----	----	----	-------	--

### SUNBIRD

CONVERTIBLE....	L3	22	29	2.0/4	
-----------------	----	----	----	-------	--

### SALEEN AUTOSPORTS INC

SALEEN SSC.....	M5	15	23	4.9/8	G
-----------------	----	----	----	-------	---

### SUZUKI

SWIFT.....	A3	30	33	1.3/4	
------------	----	----	----	-------	--

### YUGO AMERICA, INC.

YUGO GV PLUS/GV/CABRIO.....	M5	26	31	1.3/4	
-----------------------------	----	----	----	-------	--

## COMPACT CARS

### AUSTIN ROVER GROUP LTD

STERLING 827... L4	18	22	2.7/6	
	M5	19	23	2.7/6

### CHRYSLER

LEBARON.....	L4	19	26	3.0/6	
--------------	----	----	----	-------	--

### FORD

PROBE.....	L4	20	28	3.0/6	
------------	----	----	----	-------	--

### TEMPO ALL

WHEEL DRIVE....	A3	19	23	2.3/4	
-----------------	----	----	----	-------	--

### LINCOLN-MERCURY

TOPAZ ALL WHEEL DRIVE....	A3	19	23	2.3/4	
---------------------------	----	----	----	-------	--

### MERCEDES-BENZ

300D 2.5 TURBO.....	A4	27	33	2.5/5	TD
300E.....	A4	17	22	3.0/6	P
300E 2.6.....	A4	19	23	2.6/6	P
300E 4MATIC....	A4	17	21	3.0/6	GP
300SE.....	A4	16	19	3.0/6	GP
560SEC.....	A4	14	17	5.6/8	GP

### OLDSMOBILE

CUTLASS CALAIS.....	M5	22	33	2.5/4	
---------------------	----	----	----	-------	--

### PONTIAC

GRAND AM.....	M5	22	33	2.5/4	
---------------	----	----	----	-------	--

### SAAB

SAAB 900.....	M5	20	28	2.0/4	TP
---------------	----	----	----	-------	----

## COMPACT CARS (cont'd)

### SUBARU

	TRANS	CITY	HWY	ENG/CYL	
LEGACY.....	M5	22	29	2.2/4	
LEGACY 4WD....	L4	20	25	2.2/4	
	M5	20	26	2.2/4	

## MID-SIZE CARS

### ASC INC.

ASC GRAND PRIX STE TURBO.....	L4	17	25	3.1/6	TP
-------------------------------	----	----	----	-------	----

### CHRYSLER

LEBARON LANDAU.....	L4	19	26	3.0/6	
NEW YORKER....	L4	19	26	3.0/6	

### DODGE

DYNASTY.....	L4	19	26	3.0/6	
SPIRIT.....	L4	19	26	3.0/6	

### MERCEDES-BENZ

300SEL.....	A4	16	19	3.0/6	GP
350SDL TURBO.	A4	22	25	3.5/6	TD
420SEL.....	A4	15	18	4.2/8	GP
560SEL.....	A4	13	17	5.6/8	GP

### OLDSMOBILE

CUTLASS SUPREME.....	M5	22	34	2.3/4	
----------------------	----	----	----	-------	--

### PLYMOUTH

ACCLAIM.....	L4	19	26	3.0/6	
--------------	----	----	----	-------	--

### PONTIAC

GRAND PRIX.....	M5	17	28	3.1/6	
-----------------	----	----	----	-------	--

## LARGE CARS

### SAAB

SAAB 9000.....	L4	17	25	2.3/4	
	M5	20	26	2.3/4	

## SMALL STATION WAGONS

### SUBARU

LEGACY WAGON	M5	22	29	2.2/4	
--------------	----	----	----	-------	--

## MID-SIZE STATION WAGONS

### FORD

TAURUS WAGON.....	L4	18	25	3.8/6	
-------------------	----	----	----	-------	--

### LINCOLN-MERCURY

SABLE WAGON..	L4	18	25	3.8/6	
---------------	----	----	----	-------	--

\* Check the Fuel Economy Label on the Vehicle at the dealer's showroom for its MPG ratings. The MPG will vary because of engine emission controls and fuel system differences not listed in the Guide.

### ENGINE TYPES

D for Diesel  
T for Turbo  
G for Guzzler Tax  
R for Rotary  
TD for Turbo Diesel  
P for Premium Unleaded Fuel

# How To Use This Guide

## Two Seaters (see vehicle classes below)

Manufacturer	TRANS	Estimated MPG		ENG/CYL
		CITY	HWY	
CHRYSLER	L4 M5	17 18	24 25	3.0/6 P 2.2/4 TP
TC By MASERATI Convertible				

**ENGINE ABBREVIATIONS**  
 D for Diesel  
 T for Turbo  
 G for Guzzler Tax  
 R for Rotary  
 TD for Turbo Diesel  
 P for Premium Unleaded Fuel  
 \* see your dealer

**Transmission (see types below)**  
 M for Manual (light) with number of gears.  
 A for Automatic (dark) with number of gears.  
 L for Automatic Lockup (dark) with number of gears

**Engine size (Liters and number of cylinders)**

## Vehicle Classes

### CARS

#### Sedans

**Minicompact**—Less than 85 cubic feet of passenger and luggage volume (page 4)

**Subcompact**—Between 85 and 99 cubic feet of passenger and luggage volume (pages 4 and 5)

**Compact**—Between 100 and 109 cubic feet of passenger and luggage volume (pages 5 and 6)

**Mid-Size**—Between 110 and 119 cubic feet of passenger and luggage volume (pages 6 and 7)

**Large**—120 or more cubic feet of passenger and luggage volume (page 7)

**Two-Seaters**—Car designed to seat primarily two adults (page 4)

#### Station Wagons

**Small**—Less than 130 cubic feet of passenger and cargo volume (page 7)

**Mid-Size**—Between 130 and 159 cubic feet of passenger and cargo volume (pages 7 and 8)

**Large**—160 or more cubic feet of passenger and cargo volume (page 8)

### TRUCKS

**Vans**—Passenger (page 10), Cargo (page 10)

**Small Pickups**—Trucks having Gross Vehicle Weight Ratings (GVWR, truck weight plus carrying capacity) under 4,500 pounds; 2-Wheel Drive (2WD) (page 8), 4-Wheel Drive (4WD) (page 9)

**Large Pickups**—Trucks having GVWR's of 4,500 to 8,500 pounds; 2-Wheel Drive (page 10), 4-Wheel Drive (pages 9 and 10)

### SPECIAL PURPOSE VEHICLES

All other light vehicles not in another car or truck class; 2-Wheel Drive (page 11), 4-Wheel Drive (page 11), Cab chassis (page 12).

The manufacturers are listed alphabetically within each size class. Car models are listed alphabetically under each manufacturer.

## Transmission Types

A3	Automatic three speed
A4	Automatic four speed
A8	Dual range automatic four speed
AV	Continuously variable transmission
L3	Automatic lockup three speed
L4	Automatic lockup four speed
L8	Dual Range automatic lockup four speed
M3	Manual three speed
M4	Manual four speed
M4C	Manual four speed with creeper first gear
M5	Manual five speed
M5C	Manual five speed with creeper first gear

## Gas Guzzler Tax

The Energy Tax Act of 1978 established a Gas Guzzler Tax on the sale of new model year vehicles whose fuel economy fails to meet certain statutory levels. The fuel economy figures used to determine the Gas Guzzler Tax are different from the fuel economy values contained in this booklet. The tax does not depend on your actual on-the-road mpg, which may be more or less than the EPA published value.

The purpose of the Gas Guzzler Tax is to discourage the production and purchase of fuel inefficient vehicles. The amount of any applicable Gas Guzzler Tax paid by the manufacturer will be disclosed on the automobile's fuel economy label.

\* Check the Fuel Economy Label on the Vehicle at the dealer's showroom for its MPG ratings. The MPG will vary because of engine emission controls and fuel system differences not listed in the Guide.

## Annual Fuel Costs

Fuel costs are continually changing and vary considerably by area. The following chart enables you to estimate annual costs using fuel prices in your area. These costs are based on 15,000 miles of driving per year. The annual fuel cost displayed on the fuel economy label of 1990 cars is based on 15,000 miles of driving and costs of \$1.20 per gallon for premium unleaded gasoline, or \$1.05 per gallon for regular unleaded gasoline, or \$1.10 per gallon for diesel fuel. It is suggested that you use the chart to figure your costs by first calculating the cost for the estimated highway mpg for your car and then the cost for the estimated city mpg. Multiply each value by the percent of your total driving that is done in the city and the percent that is done on the highway and add the two values together to yield the total cost. For example, for someone who did 80 percent city driving and 20 percent highway driving and who was considering purchasing a car which was listed as achieving 35 mpg for highway driving and 21 mpg for city driving, the calculation would appear as:

city driving mpg ..... \$750 and  
 highway driving mpg ..... \$450 assuming  
 gasoline cost \$1.05 per gallon.  
 Then,  $(\$750 \times 0.8) + (\$450 \times 0.2) = \$690$ , the total annual cost for fuel.

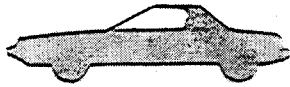
The reader is cautioned that simply averaging the mpg for city and highway driving and then looking up a single value in the table will yield an incorrect answer.

## ANNUAL FUEL COSTS CHART For 1990 Model Year Based on 15,000 Miles per Year

Est MPG	Dollars Per Gallon					
	1.55	1.45	1.35	1.25	1.15	1.05
50	465	435	405	375	345	315
49	474	444	413	382	352	321
48	484	452	421	390	359	328
47	495	463	431	399	367	335
46	505	472	439	407	375	342
45	516	483	450	416	383	350
44	528	494	460	426	392	358
43	542	507	472	437	401	366
42	553	518	482	446	411	375
41	567	531	494	458	421	384
40	581	544	506	469	431	394
39	595	557	518	480	442	404
38	611	572	533	493	454	414
37	628	587	547	506	466	426
36	646	605	563	521	479	438
35	665	622	579	536	493	450
34	684	639	595	551	507	463
33	704	659	614	568	523	477
32	725	679	632	585	539	492
31	751	703	654	606	556	508
30	774	724	674	624	575	525
29	802	750	699	647	595	543
28	830	776	723	669	616	563
27	860	805	749	694	639	583
26	895	837	780	722	663	606
25	930	870	810	750	690	630
24	970	907	844	782	719	656
23	1011	946	881	816	750	685
22	1058	990	921	853	784	716
21	1107	1035	964	892	821	748
20	1162	1088	1012	936	862	783
19	1223	1144	1065	986	908	829
18	1293	1209	1126	1042	958	875
17	1367	1279	1191	1102	1015	926
16	1453	1359	1266	1172	1078	984
15	1551	1451	1351	1251	1150	1050
14	1660	1553	1446	1339	1232	1125
13	1788	1673	1557	1442	1327	1212
12	1937	1812	1687	1562	1438	1313
11	2113	1977	1841	1704	1568	1432
10	2325	2175	2025	1875	1725	1575
9	2583	2416	2250	2083	1917	1750

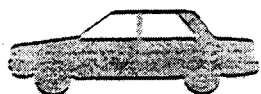
For those who purchase fuel by the liter, 3.785 liters equals one gallon.

**TWO SEATERS**



ALFA ROMEO	TRANS CITY HWY	ENG./CYL
SPIDER.....	M5 29 30	2.0/4 P
<b>BUICK</b>		
REATA.....	L4 19 27	3.8/6
<b>CADILLAC</b>		
ALLANTE.....	L4 15 22	4.5/8 GP
<b>CHEVROLET</b>		
CORVETTE.....	L4 16 24	5.7/8 P
	M5 19 25	5.7/8 P
<b>CHRYSLER</b>		
TC BY		
MASERATI		
CONVERTIBLE....	M5 18 26	2.2/4 TP
	L4 17 24	3.0/6 P
<b>FERRARI</b>		
TESTAROSSA.....	M5 10 15	4.9/12 G
<b>HONDA</b>		
CIVIC CRX.....	L4 25 35	1.5/4
	M5 32 36	1.5/4
	M5 26 33	1.6/4
CIVIC CRX HF....	M5 43 49	1.5/4
	M5 48 52	1.5/4 *
<b>LAMBORGHINI</b>		
COUNTACH.....	M5 9 10	5.2/12 GP
<b>LOTUS</b>		
LOTUS ESPRIT		
TURBO.....	M5 17 27	2.2/4 TP
<b>MASERATI</b>		
KARIF.....	L4 15 18	2.8/6 TGP
	M5 15 20	2.8/6 TGP
SPYDER.....	L4 18 18	2.8/6 TGP
	M5 18 20	2.8/6 TGP
<b>MAZDA</b>		
MAZDA RX-7.....	L4 17 23	1.3/2
	M5 17 23	1.3/2
	M5 16 24	1.3/2 T
MX-5 MIATA.....	M5 26 30	1.6/4
<b>NISSAN MOTOR COMPANY, LTD.</b>		
300ZX.....	L4 18 24	3.0/6 TP
	L4 19 24	3.0/6
	M5 18 24	3.0/6
	M5 18 24	3.0/6 TP

**MINICOMPACT CARS**



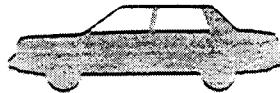
MASERATI	TRANS CITY HWY	ENG./CYL
222E.....	L4 15 18	2.8/6 TGP
	M5 15 20	2.8/6 TGP

**MINICOMPACT CARS (cont'd)**

TRANS CITY HWY ENG./CYL

NISSAN MOTOR COMPANY, LTD.		
240SX.....	L4 20 25	2.4/4
	M5 20 27	2.4/4
<b>PORSCHE</b>		
911 CARRERA		
4/2.....	M5 16 24	3.6/6 GP
(4WD).....	M5 15 22	3.6/6 GP
928 S4.....	A4 15 19	5.0/8 GP
	M5 13 19	5.0/8 GP
944 S2.....	M5 17 26	3.0/4 P
<b>VOLKSWAGEN</b>		
CABRIOLET.....	A3 23 23	1.8/4
	M5 25 32	1.8/4

**SUBCOMPACT CARS**



ACURA	TRANS CITY HWY	ENG./CYL
INTEGRA.....	L4 23 27	1.8/4
	M5 24 28	1.8/4
<b>AUDI</b>		
COUPE		
QUATTRO.....	M5 18 24	2.3/5
80.....	A3 23 27	2.0/4
	M5 22 30	2.0/4
80 QUATTRO....	M5 18 24	2.3/5
90.....	A3 19 22	2.3/5
	M5 20 26	2.3/5
90 QUATTRO		
20V.....	M5 18 24	2.3/5
<b>BMW</b>		
M3.....	M5 17 29	2.3/4 P
325i		
CONVERTIBLE....	L4 18 23	2.5/6
	M5 18 25	2.5/6
325i/325iS.....	L4 18 22	2.5/6
	M5 18 23	2.5/6
325iX.....	L4 19 23	2.5/6
	M5 17 23	2.5/6
<b>CHEVROLET</b>		
CAMARO.....	L4 18 27	3.1/6
	L4 17 24	5.0/8 P
	L4 17 25	5.0/8
	M5 16 25	5.0/8 P
	M5 17 25	5.0/8
	L4 16 24	5.7/8 P

**CHRYSLER**

LEBARON		
CONVERTIBLE....	M5 20 28	2.2/4 TP
	A3 19 23	2.5/4 TP
	L3 22 27	2.5/4
	M5 19 27	3.0/6

**DAIHATSU MOTOR CO., LTD.**

CHARADE.....	M5 33 42	1.0/3
	A3 31 34	1.3/4
	M5 35 39	1.3/4

**SUBCOMPACT CARS (cont'd)**

TRANS CITY HWY ENG./CYL

DODGE		
COLT.....	L3 27 29	1.5/4
	M4 31 36	1.5/4
	M5 28 34	1.5/4
	L4 23 28	1.6/4
	M5 23 29	1.6/4
DAYTONA.....	M5 20 28	2.2/4 TP
	A3 19 23	2.5/4 TP
	L3 22 27	2.5/4
	M5 24 32	2.5/4
	M5 20 29	2.5/4 TP
	M5 19 27	3.0/6
OMNI.....	L3 25 30	2.2/4
	M5 25 34	2.2/4
<b>EAGLE</b>		
TALON.....	L4 22 27	2.0/4
	M5 22 29	2.0/4
	M5 22 29	2.0/4 TP
(4WD).....	M5 20 25	2.0/4 TP
<b>FORD</b>		
FESTIVA.....	A3 31 33	1.3/4
	M5 35 41	1.3/4
MUSTANG.....	L4 27 27	2.3/4
	M5 23 29	2.3/4
	L4 17 25	5.0/8
	M5 17 24	5.0/8
<b>Geo</b>		
METRO.....	A3 37 41	1.0/3
	M5 46 50	1.0/3
METRO LSi.....	A3 37 39	1.0/3
	M5 46 50	1.0/3
METRO Xfi.....	M5 53 58	1.0/3
PRIZM.....	L3 25 29	1.6/4
	L4 23 30	1.6/4
	M5 25 31	1.6/4
	M5 28 34	1.6/4 *
STORM.....	A3 25 31	1.6/4
	L4 24 32	1.6/4
	M5 26 34	1.6/4
	M5 31 36	1.6/4 *
<b>HONDA</b>		
CIVIC.....	L4 28 33	1.5/4
	M4 33 37	1.5/4
	M5 31 34	1.5/4
	L4 25 28	1.6/4
	M5 28 32	1.6/4
<b>HYUNDAI MOTOR COMPANY</b>		
EXCEL.....	L4 28 32	1.5/4
	M4 29 33	1.5/4
	M5 29 36	1.5/4
PRECIS.....	L4 28 32	1.5/4
	M4 29 33	1.5/4
	M5 29 36	1.5/4
<b>INFINITI</b>		
M30.....	L4 19 25	3.0/6 P
<b>ISUZU MOTORS LIMITED</b>		
IMPULSE.....	L4 24 32	1.6/4
	M5 26 34	1.6/4
	M5 22 28	1.6/4 TP

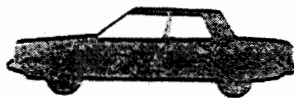
### SUBCOMPACT CARS (cont'd)

	TRANS	CITY	HWY	ENG/CYL	
<b>MASERATI</b>					
430.....	L4	15	18	2.8/6	TGP
	M5	18	20	2.8/6	TGP
<b>MINISUBISHI</b>					
ECLIPSE.....	L4	23	30	1.8/4	
	M5	23	32	1.8/4	
	L4	22	31	2.0/4	
	M5	22	29	2.0/4	
	M5	22	29	2.0/4	TP
	M5	20	26	2.0/4	TP
MIRAGE.....	L3	27	29	1.5/4	
	M4	31	36	1.5/4	
	M5	23	34	1.5/4	
	L4	23	28	1.6/4	
	M5	23	23	1.6/4	
<b>NISSAN MOTOR COMPANY, LTD.</b>					
PULSAR NX.....	L3	23	31	1.6/4	
	M5	26	34	1.6/4	
	L4	21	29	1.8/4	
	M5	20	30	1.8/4	
SENTRA.....	L3	26	31	1.6/4	
	M4	26	36	1.6/4	
	M5	25	32	1.6/4	
SENTRA COUPE.....	L3	25	31	1.6/4	
	M5	26	36	1.6/4	
300ZX 2.2.....	L4	19	24	3.0/6	P
	M5	19	24	3.0/6	P
<b>PLYMOUTH</b>					
COLT.....	L3	27	29	1.5/4	
	M4	31	36	1.5/4	
	M5	26	34	1.5/4	
	L4	23	28	1.6/4	
	M5	23	23	1.6/4	
HORIZON.....	L3	25	30	2.2/4	
	M5	25	34	2.2/4	
LASER.....	L4	23	30	1.8/4	
	M5	23	32	1.8/4	
	L4	22	27	2.0/4	
	M5	22	29	2.0/4	
	M5	22	26	2.0/4	TP
<b>PONTIAC</b>					
FIREBIRD/ TRANS AM.....	L4	16	17	3.1/6	
	L4	17	24	5.0/8	P
	L4	17	26	5.0/8	
	M5	16	23	5.0/8	P
	M5	17	25	5.0/8	
	L4	16	24	5.7/8	P
SUNBIRD CONVERTIBLE....	L3	21	28	2.0/4	TP
	M5	21	30	2.0/4	TP
	M5	24	33	2.0/4	
<b>ROLLS-ROYCE MOTOR CARS LTD.</b>					
BENTLEY CONTINENTAL...	A3	10	13	6.8/8	GP
CORNICHE III....	A3	10	13	6.8/8	GP
<b>SAAB</b>					
SAAB 900 CONVERTIBLE....	A3	18	21	2.0/4	T
	M5	21	28	2.0/4	T
<b>SUBARU</b>					
JUSTY.....	AV	34	35	1.2/3	
	M5	33	37	1.2/3	

### SUBCOMPACT CARS (cont'd)

	TRANS	CITY	HWY	ENG/CYL	
JUSTY 4WD.....	AV	32	32	1.2/3	
	M5	28	33	1.2/3	
XT.....	L4	20	26	1.8/4	
	M5	26	31	1.8/4	
	L4	20	28	2.7/6	
XT 4WD.....	L4	22	29	1.8/4	
	M5	24	33	1.8/4	
	L4	19	25	2.7/6	
	M5	19	25	2.7/6	
<b>SUZUKI</b>					
SWIFT.....	A3	38	39	1.0/3	
	M5	48	50	1.0/3	
	A3	31	34	1.3/4	
	M5	40	44	1.3/4	
SWIFT GT.....	A3	35	38	1.3/4	
	M5	29	33	1.3/4	
<b>TOYOTA</b>					
CELICA.....	L4	25	33	1.6/4	
	M5	28	38	1.6/4	
	M5	19	24	2.0/4	TP
	L4	22	28	2.2/4	
	L4	24	31	2.2/4	*
	M5	23	29	2.2/4	
COROLLA.....	L3	26	29	1.6/4	
	L4	24	29	1.6/4	
(4WD)	L4	25	33	1.6/4	
	M5	26	33	1.6/4	
(4WD)	M5	22	28	1.6/4	
	M5	25	31	1.6/4	P
SUPRA.....	L4	18	23	3.0/6	P
	L4	19	23	3.0/6	TP
	M5	18	23	3.0/6	P
	M5	17	22	3.0/6	TP
TERCEL.....	L3	26	32	1.5/4	
	M4	31	33	1.5/4	
	M5	30	33	1.5/4	
	L3	27	31	1.5/4	
<b>VOLKSWAGEN</b>					
CORRADO.....	M5	21	28	1.8/4	
FOX.....	M4	25	30	1.8/4	
	M5	24	29	1.8/4	

### COMPACT CARS



	TRANS	CITY	HWY	ENG/CYL	
<b>ACURA</b>					
LEGEND.....	L4	18	22	2.7/6	
	M5	19	24	2.7/6	
<b>BMW</b>					
525i.....	L4	18	23	2.5/6	
	M5	19	25	2.5/6	
535i.....	L4	15	21	3.4/6	G
	M5	15	23	3.4/6	G
<b>BUICK</b>					
SKYLARK.....	L3	23	31	2.3/4	
	L3	23	31	2.5/4	
	L3	20	27	3.3/6	

### COMPACT CARS (cont'd)

	TRANS	CITY	HWY	ENG/CYL	
<b>CHEVROLET</b>					
BERETTA.....	L3	24	31	2.2/4	
	M5	24	34	2.2/4	
	M5	22	31	2.3/4	
	L3	20	27	3.1/6	
	M5	19	28	3.1/6	
CAVALIER.....	L3	25	33	2.2/4	
	M5	25	35	2.2/4	
	L3	20	27	3.1/6	
	M5	19	28	3.1/6	
<b>CHRYSLER</b>					
LEBARON.....	M5	20	28	2.2/4	TP
	A3	19	23	2.5/4	TP
	L3	22	27	2.5/4	
	M5	19	28	3.0/6	
<b>DODGE</b>					
SHADOW.....	L3	23	28	2.2/4	
	M5	24	31	2.2/4	
	M5	20	28	2.2/4	TP
	A3	20	23	2.5/4	TP
	L3	22	27	2.5/4	
	M5	24	32	2.5/4	
	M5	21	25	2.5/4	TP
<b>EAGLE</b>					
SUMMIT.....	L3	27	29	1.5/4	
	M5	26	34	1.5/4	
	L4	23	28	1.6/4	
	M5	23	28	1.6/4	
<b>FORD</b>					
ESCORT.....	A3	27	31	1.9/4	
	M4	32	42	1.9/4	
	M5	24	30	1.9/4	
	M5	27	38	1.9/4	*
PROBE.....	L4	21	28	2.2/4	
	L4	19	25	2.2/4	TP
	M5	24	30	2.2/4	
	M5	21	27	2.2/4	TP
	L4	19	26	3.0/6	
	M5	19	26	3.0/6	
TEMPO.....	A3	22	26	2.3/4	
	A3	18	23	2.3/4	*
	M5	21	28	2.3/4	
	M5	23	33	2.3/4	*
<b>HONDA</b>					
ACCORD.....	L4	22	28	2.2/4	
	M5	24	30	2.2/4	
<b>ISUZU MOTORS LIMITED</b>					
STYLUS.....	A3	27	32	1.6/4	
	M5	25	33	1.6/4	
	M5	32	37	1.6/4	*
<b>JAGUAR</b>					
JAGUAR.....	L4	17	22	4.0/6	P
<b>LEXUS</b>					
ES250.....	L4	19	25	2.5/6	
	M5	19	26	2.5/6	
<b>LINCOLN-MERCURY</b>					
TOPAZ.....	A3	22	26	2.3/4	
	A3	19	23	2.3/4	*
	M5	21	28	2.3/4	
	M5	23	33	2.3/4	*
<b>MAZDA</b>					
323/323					
PROTEGE.....	L4	26	33	1.6/4	



**COMPACT CARS (cont'd)**

	TRANS	CITY	HWY	ENG/CYL
	M5	29	37	1.6/4
	L4	28	29	1.8/4
	L4	24	32	1.8/4 *
(4WD)	L4	21	26	1.8/4
	M5	25	30	1.8/4
(4WD)	M5	23	36	1.8/4 *
	M5	24	29	1.8/4
<b>MINI</b>				
GALANT	L4	22	27	2.0/4
	M5	21	27	2.0/4
	M5	20	23	2.0/4 *
(4WD)	M5	23	29	2.0/4
SIGMA	A4	18	22	3.0/6
<b>NISSAN MOTOR COMPANY, LTD.</b>				
STANZA	L4	21	27	2.4/4
	M5	22	29	2.4/4
<b>OLDSMOBILE</b>				
<b>OUTLASS</b>				
CALAIS	L3	23	31	2.3/4
	M5	22	31	2.3/4
	L3	23	31	2.5/4
	M5	22	33	2.5/4
	L3	20	27	3.3/6
<b>PEUGEOT</b>				
405 SEDAN	L4	20	25	1.9/4
	M5	20	27	1.9/4
	M5	20	28	1.9/4 P
<b>PLYMOUTH</b>				
SUNDANCE	L3	23	28	2.2/4
	M5	24	31	2.2/4
	A3	20	23	2.5/4 TP
	L3	22	27	2.5/4
	M5	24	32	2.5/4
	M5	21	29	2.5/4 TP
<b>PONTIAC</b>				
GRAND AM	L3	23	31	2.3/4
	M5	22	31	2.3/4
	L3	23	31	2.5/4
	M5	22	33	2.5/4
LEMANS	L3	27	33	1.6/4
	M4	29	38	1.6/4
	M5	31	40	1.6/4
	L3	23	30	2.0/4
	M5	25	31	2.0/4
SUNBIRD	L3	24	32	2.0/4
	L3	21	28	2.0/4 TP
	M5	21	30	2.0/4 TP
	M5	25	36	2.0/4
<b>SAAB</b>				
SAAB 900	A3	19	22	2.0/4
	A3	19	23	2.0/4 T
	M5	22	28	2.0/4
	M5	22	29	2.0/4 T
	M5	21	28	2.0/4 TP
<b>SUBARU</b>				
LEGACY	L4	21	28	2.2/4
	M3	23	30	2.2/4
LEGACY 4WD	L4	20	26	2.2/4
	M5	21	27	2.2/4
LOYALE	A3	22	24	1.8/4 T
	L3	24	26	1.8/4
	M5	25	32	1.8/4

**COMPACT CARS (cont'd)**

	TRANS	CITY	HWY	ENG/CYL
LOYALE 4WD				
TURBO	L4	20	26	1.8/4 T
<b>TOYOTA</b>				
CAMRY	L4	25	31	2.0/4
(4WD)	L4	21	24	2.0/4
	L4	24	31	2.0/4 *
	M5	26	34	2.0/4
(4WD)	M5	22	27	2.0/4
	L4	19	25	2.5/6
	M5	19	26	2.5/6
CRESSIDA	L4	19	24	3.0/6 P
<b>VOLKSWAGEN</b>				
GOLF/GTI	A3	23	29	1.8/4
	M5	25	32	1.8/4
GTI 16V	M5	22	28	2.0/4
JETTA	M5	37	43	1.6/4 D
	A3	25	28	1.8/4
	M5	25	32	1.8/4
JETTA GLI 16V	M5	22	28	2.0/4
<b>VOLVO</b>				
240	A4	20	25	2.3/4
	M5	21	28	2.3/4
780	A4	18	21	2.3/4 T
	A4	17	21	2.8/6 G

**MID-SIZE CARS**



	TRANS	CITY	HWY	ENG/CYL
<b>ASC INC.</b>				
ASC GRAND				
PRIX TURBO	L4	17	25	3.1/6 TP
<b>AUDI</b>				
V8	L4	14	18	3.5/8 G
100	A3	18	22	2.3/5
	L4	18	23	2.3/5
100 QUATTRO	M5	18	24	2.3/5
200	A3	18	22	2.2/5 T
200 QUATTRO	M5	17	25	2.2/5 T
<b>BMW</b>				
735i	L4	15	21	3.4/6 G
	M5	15	23	3.4/6 G
735iL	L4	15	21	3.4/6 G
750iL	L4	12	18	5.0/12 G
<b>BUICK</b>				
CENTURY	L3	23	31	2.5/4
	L3	20	27	3.3/6
	L4	20	29	3.3/6
REGAL	L4	19	30	3.1/6
RIVIERA	L4	18	27	3.8/6
<b>CADILLAC</b>				
ELDORADO	L4	16	25	4.5/8 P
SEVILLE	L4	16	25	4.5/8 P

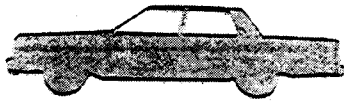
**MID-SIZE CARS (cont'd)**

	TRANS	CITY	HWY	ENG/CYL
<b>CHEVROLET</b>				
CORSICA	L3	24	31	2.2/4
	M5	24	34	2.2/4
	L3	20	27	3.1/6
	M5	19	25	3.1/6
LUMINA	L3	27	37	2.5/4
	L3	19	27	3.1/6
	L4	19	30	3.1/6
<b>CHRYSLER</b>				
NEW YORKER	L4	19	25	3.3/6
<b>DODGE</b>				
DYNASTY	L3	22	27	2.5/4
	L4	19	26	3.3/6
SPIRIT	A3	19	23	2.5/4 TP
	L3	22	27	2.5/4
	M5	24	32	2.5/4
	M5	21	29	2.5/4 TP
<b>FORD</b>				
TAURUS	A3	20	26	2.5/4
	L4	20	29	3.0/6
	M5	18	27	3.0/6 P
	L4	19	28	3.8/6
THUNDERBIRD	L4	19	27	3.8/6
	L4	17	23	3.8/6 P
	M5	17	24	3.8/6 P
<b>HYUNDAI MOTOR COMPANY</b>				
SONATA	L4	21	26	2.4/4
	M5	21	28	2.4/4
	A4	18	24	3.0/6
<b>INFINITI</b>				
Q45	L4	16	22	4.5/8 GP
<b>LEXUS</b>				
LS400	L4	18	23	4.0/8 P
<b>LINCOLN-MERCURY</b>				
COUGAR	L4	19	27	3.8/6
	L4	17	23	3.8/6 P
	M5	17	24	3.8/6 P
MARK VII	L4	17	24	5.0/8
SABLE	L4	20	29	3.0/6
	L4	19	28	3.8/6
<b>MASERATI</b>				
228	L4	15	18	2.8/6 TGP
	M5	14	19	2.8/6 TGP
<b>MAZDA</b>				
626/MX-6	L4	22	28	2.2/4
	L4	19	25	2.2/4 TP
	M5	24	31	2.2/4
	M5	21	28	2.2/4 TP
929	L4	18	22	3.0/6
	L4	18	23	3.0/6
<b>NISSAN MOTOR COMPANY, LTD.</b>				
MAXIMA	L4	19	25	3.0/6 P
	M5	20	26	3.0/6 P
<b>OLDSMOBILE</b>				
OUTLASS CIERA	L3	23	31	2.5/4
	L3	20	27	3.3/6
	L4	20	25	3.3/6

### MID-SIZE CARS (cont'd)

	TRANS	CITY	HWY	ENG./CYL
<b>OUTLASS SUPREME</b>				
	L3	22	29	2.3/4
	L4	19	30	3.1/6
<b>TROFEO/TORONADO</b>				
	L4	18	27	3.8/6
<b>PLYMOUTH</b>				
<b>ACCLAIM</b>				
	L3	22	27	2.5/4
	M5	24	32	2.5/4
	M5	21	29	2.5/4 TP
<b>PONTIAC</b>				
<b>GRAND PRIX</b>				
	L3	22	29	2.3/4
	L4	19	30	3.1/6
<b>6000</b>				
	L3	23	31	2.5/4
	L3	20	27	3.1/6
(4WD)	L3	17	23	3.1/6
	L4	19	30	3.1/6
<b>ROLLS-ROYCE MOTOR CARS LTD.</b>				
<b>BENTLEY EIGHT/BENTLEY MULSAN</b>				
	A3	10	13	6.8/8 GP
<b>SILVER SPIRIT W/SILVER SPUR</b>				
	A3	10	13	6.8/8 GP
<b>VOLKSWAGEN</b>				
<b>PASSAT</b>				
	L4	20	26	2.0/4
	M5	21	30	2.0/4
<b>VOLVO</b>				
<b>740</b>				
	A4	18	21	2.3/4 T
	L4	20	26	2.3/4
	M4	20	25	2.3/4 T
	M3	21	25	2.3/4
<b>740 16-VALVE</b>				
	L4	19	24	2.3/4
	M4	19	26	2.3/4
<b>760</b>				
	A4	18	21	2.3/4 T
	A4	17	21	2.8/6 G

### LARGE CARS



	TRANS	CITY	HWY	ENG./CYL
<b>BUICK</b>				
<b>ELECTRA/PARK AVENUE</b>				
	L4	18	27	3.8/6
<b>LESABRE</b>				
	L4	18	27	3.8/6
<b>CADILLAC</b>				
<b>BROUGHAM</b>				
	L4	17	24	5.0/8
	L4	14	21	5.7/8 G
<b>FLEETWOOD/DEVILLE</b>				
	L4	13	25	4.5/8 P
<b>CHEVROLET</b>				
<b>CAPRICE</b>				
	L4	19	27	4.3/6
	L4	16	25	5.0/8
<b>CHRYSLER</b>				
<b>NEW YORKER FIFTH AVENUE/IMPERIAL</b>				
	L4	18	25	3.3/6

### LARGE CARS (cont'd)

	TRANS	CITY	HWY	ENG./CYL
<b>DODGE</b>				
<b>MONACO</b>				
	L4	17	26	3.0/6
<b>EAGLE</b>				
<b>PREMIER</b>				
	L4	17	26	3.0/6
<b>FORD</b>				
<b>LTD CROWN VICTORIA</b>				
	L4	17	24	5.0/8
<b>LINCOLN-MERCURY</b>				
<b>CONTINENTAL</b>				
	L4	18	25	3.8/6
<b>GRAND MARQUIS</b>				
	L4	17	24	5.0/8
<b>TOWN CAR</b>				
	L4	17	24	5.0/8
<b>OLDSMOBILE</b>				
<b>EIGHTY-EIGHT</b>				
	L4	18	27	3.8/6
<b>NINETY-EIGHT/TOURING</b>				
	L4	18	27	3.8/6
<b>PONTIAC</b>				
<b>BONNEVILLE</b>				
	L4	18	27	3.8/6
<b>SAAB</b>				
<b>SAAB 9000</b>				
	L4	18	24	2.0/4
	L4	18	24	2.0/4 T
	M5	21	28	2.0/4
	M5	20	28	2.0/4 T

### SMALL STATION WAGONS



	TRANS	CITY	HWY	ENG./CYL
<b>CHEVROLET</b>				
<b>CAVALIER WAGON</b>				
	L3	24	31	2.2/4
	M3	25	36	2.2/4
	L3	20	27	3.1/6
	M5	19	28	3.1/6
<b>DODGE</b>				
<b>COLT VISTA</b>				
	L3	22	29	2.0/4
	M5	23	29	2.0/4
<b>COLT WAGON</b>				
	L3	27	35	1.5/4
	M5	28	34	1.5/4
<b>FORD</b>				
<b>ESCORT WAGON</b>				
	A3	25	31	1.9/4
	M5	27	35	1.9/4
<b>HONDA</b>				
<b>CIVIC WAGON</b>				
	L4	28	32	1.5/4
	M5	31	34	1.5/4
<b>CIVIC WAGON 4WD</b>				
	L4	24	26	1.6/4
	M5	24	26	1.6/4
<b>MITSUBISHI</b>				
<b>MIRAGE WAGON</b>				
	L3	27	29	1.5/4
	M5	28	34	1.5/4
<b>SPACE WAGON</b>				
	L3	22	23	2.0/4

### SMALL STATION WAGONS (cont'd)

	TRANS	CITY	HWY	ENG./CYL
<b>NISSAN MOTOR COMPANY, LTD.</b>				
<b>SENTRA WAGON</b>				
	L3	26	30	1.6/4
	M5	27	35	1.6/4
<b>PLYMOUTH</b>				
<b>COLT VISTA</b>				
	L3	22	23	2.0/4
	M5	23	29	2.0/4
<b>COLT WAGON</b>				
	L3	27	29	1.5/4
	M5	28	34	1.5/4
<b>SUBARU</b>				
<b>LEGACY WAGON</b>				
	L4	21	28	2.2/4
	M5	23	30	2.2/4
<b>LEGACY WAGON 4WD</b>				
	L4	20	25	2.2/4
	M5	20	25	2.2/4
<b>LOYALE WAGON</b>				
	A3	22	24	1.8/4 T
	L3	24	28	1.8/4
	M5	25	30	1.8/4
<b>LOYALE WAGON 4WD TURBO</b>				
	L4	20	26	1.8/4 T
<b>TOYOTA</b>				
<b>CAMRY WAGON</b>				
	L4	25	31	2.0/4
	L4	19	25	2.5/6
<b>COROLLA ALL-TRAC WAGON</b>				
	L4	24	29	1.5/4
	M5	22	28	1.6/4
<b>COROLLA WAGON</b>				
	L3	26	29	1.6/4
	M5	28	33	1.6/4
<b>VOLKSWAGEN</b>				
<b>FOX WAGON</b>				
	M4	25	30	1.8/4

### MID-SIZE STATION WAGONS



	TRANS	CITY	HWY	ENG./CYL
<b>AUDI</b>				
<b>200 QUATTRO WAGON</b>				
	M5	17	24	2.2/5 T
<b>BUICK</b>				
<b>CENTURY WAGON</b>				
	L3	21	27	2.5/4
	L3	19	25	3.3/6
	L4	20	29	3.3/6
<b>CHEVROLET</b>				
<b>CELEBRITY WAGON</b>				
	L3	23	31	2.5/4
	L4	19	30	3.1/6
<b>FORD</b>				
<b>TAURUS WAGON</b>				
	L4	20	29	3.0/6
<b>TAURUS WAGON V6 A/C</b>				
	L4	19	28	3.0/6
	L4	18	25	3.8/6

### MID-SIZE STATION WAGONS (cont'd)

TRANS CITY HWY ENG/CYL

#### LINCOLN-MERCURY

SABLE WAGON... L4 20 29 3.0/6

#### SABLE WAGON

V6 A/C..... L4 19 26 3.0/6  
L4 18 25 3.8/6

#### OLDSMOBILE

#### OUTLASS

CRUISER..... L3 21 27 2.5/4  
L4 20 29 3.3/6

#### PEUGEOT

#### 405 STATION

WAGON..... L4 20 24 1.9/4  
M5 20 26 1.9/4

#### 505 STATION

WAGON..... L4 19 21 2.2/4  
L4 19 21 2.2/4 TP  
M5 18 22 2.2/4

#### PONTIAC

6000 WAGON... L3 21 27 2.5/4  
L4 19 30 3.1/6

#### VOLKSWAGEN

PASSAT WAGON L4 20 29 2.0/4

#### VOLVO

240 WAGON..... A4 19 24 2.3/4  
M5 21 27 2.3/4

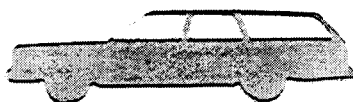
740 WAGON..... A4 18 21 2.3/4 T  
L4 20 26 2.3/4  
M4 20 25 2.3/4 T  
M5 21 28 2.3/4

#### 740 16-VALVE

WAGON..... L4 18 24 2.3/4  
M4 18 25 2.3/4

760 WAGON..... A4 18 21 2.3/4 T

### LARGE STATION WAGONS



BUICK TRANS CITY HWY ENG/CYL

#### LESABRE/

ELECTRA WAGON..... L4 17 24 5.0/8

#### CHEVROLET

#### CAPRICE

WAGON..... L4 17 24 5.0/8

#### FORD

#### LTD CROWN

VICTORIA WAGON..... L4 17 24 5.0/8

#### LINCOLN-MERCURY

#### GRAND

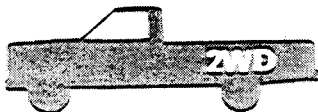
MARQUIS WAGON..... L4 17 24 5.0/8

#### OLDSMOBILE

#### CUSTOM

CRUISER..... L4 17 24 5.0/8

### 2WD SMALL PICKUPS



CHEVROLET TRANS CITY HWY ENG/CYL

#### S10 PICKUP

2WD..... L4 21 27 2.5/4  
M5 23 27 2.5/4  
M5 19 25 2.8/6  
L4 18 23 4.3/6  
M5 17 23 4.3/6

#### DODGE

RAM 50 2WD... L4 19 23 2.4/4  
M5 19 24 2.4/4

#### FORD

#### RANGER

PICKUP 2WD.... L4 21 25 2.3/4  
M5 24 29 2.3/4  
L4 17 21 2.9/6  
M5 18 23 2.9/6

#### GMC

#### S15 PICKUP

2WD..... L4 21 27 2.5/4  
M5 23 27 2.5/4  
M5 19 25 2.8/6  
L4 18 23 4.3/6  
M5 17 23 4.3/6

#### ISUZU MOTORS LIMITED

PICKUP 2WD.... M5 22 24 2.3/4  
L4 19 23 2.6/4  
M5 19 24 2.6/4

#### MITSUBISHI

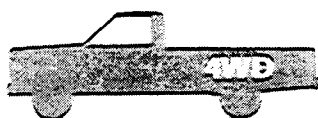
TRUCK 2WD..... L4 19 23 2.4/4  
M5 19 24 2.4/4

#### NISSAN MOTOR COMPANY, LTD.

#### HARDBODY

2WD..... L4 22 25 2.4/4  
M5 23 27 2.4/4  
L4 18 24 3.0/6  
M5 19 23 3.0/6

### 4WD SMALL PICKUPS

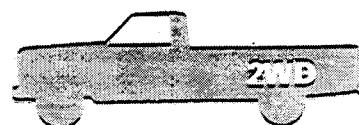


FORD TRANS CITY HWY ENG/CYL

#### RANGER

PICKUP 4WD.... M5 21 25 2.3/4  
L4 16 21 2.9/6  
M5 18 22 2.9/6

### 2WD LARGE PICKUPS



CHEVROLET TRANS CITY HWY ENG/CYL

#### C1500 PICKUP

2WD..... A3 18 21 4.3/6  
L4 17 22 4.3/6  
M4C18 20 4.3/6  
M5 18 24 4.3/6  
A3 15 18 5.0/8  
L4 15 20 5.0/8  
M5 15 20 5.0/8  
L4 18 19 5.7/8  
M4C12 14 5.7/8  
M5 13 18 5.7/8  
L4 18 23 6.2/8 D  
M4C16 21 6.2/8 D  
A3 10 11 7.4/8

#### C2500 PICKUP

2WD..... A3 16 17 4.3/6  
L4 16 21 4.3/6  
M4C16 18 4.3/6  
M5 17 24 4.3/6  
A3 14 15 5.0/8  
L4 15 18 5.0/8  
M5 15 15 5.0/8  
L4 13 17 5.7/8  
M4C12 14 5.7/8  
M5 13 18 5.7/8  
L4 17 22 6.2/8 D  
M4C18 20 6.2/8 D

#### DODGE

#### DAKOTA

PICKUP 2WD.... M5 21 28 2.5/4  
L4 16 21 3.9/6  
M5 16 22 3.9/6

#### D100/D150

PICKUP 2WD.... L3 15 17 3.9/6  
L4 16 21 3.9/6  
M4C15 13 3.9/6  
M5 13 18 3.9/6  
A4 13 15 5.2/8  
L3 13 16 5.2/8  
L4 13 17 5.2/8  
M4 14 18 5.2/8  
M4C13 13 5.2/8  
A4 12 14 5.9/8  
M4C10 14 5.9/8

#### D250 PICKUP

2WD..... L3 15 17 3.9/6  
M4C14 17 3.9/6  
A4 12 15 5.2/8  
L4 13 17 5.2/8  
M4C12 14 5.2/8  
A4 11 13 5.9/8  
M4C10 14 5.9/8

#### FORD

#### F150 PICKUP

2WD..... A3 14 16 4.9/6  
L4 15 20 4.9/6  
M4C16 18 4.9/6  
M5 16 20 4.9/6  
A3 13 15 5.0/8  
L4 14 18 5.0/8

### 2WD LARGE PICKUPS (cont'd)

TRANS CITY HWY ENCL

M4C14 15 50/8  
M5 17 17 50/8  
L4 18 16 58/8

F250 PICKUP  
2WD.....

A3 18 15 49/6  
L4 19 16 49/6  
M4C15 17 49/6  
M5 18 16 49/6  
M5C15 19 49/6  
L4 19 18 50/8  
M4C16 15 50/8  
M5 16 15 50/6  
L4 11 13 58/8

GMC

C1500 SIERRA  
2WD.....

A3 18 21 43/6  
L4 17 22 43/6  
M4C18 20 43/6  
M5 18 24 43/6  
L4 15 20 50/8  
M5 15 20 50/8  
L4 15 19 57/8  
M4C12 14 57/8  
M5 13 18 57/8  
L4 18 23 62/8 D  
M4C19 21 62/8 D

C2500 SIERRA  
2WD.....

A3 16 17 43/6  
L4 16 21 43/6  
M4C16 18 43/6  
M5 17 24 43/6  
A3 14 15 50/8  
L4 15 19 50/8  
M5 15 19 50/8  
L4 12 17 57/8  
M4C12 14 57/8  
M5 13 18 57/8  
L4 17 22 62/8 D  
M4C18 20 62/8 D

ISUZU MOTORS LIMITED

PICKUP 2WD 1

TON..... M5 18 22 2.6/4

JEEP

COMANCHE

PICK/UP 2WD ...

L4 18 24 2.5/4  
M4 20 23 2.5/4  
M4 22 25 2.5/4 \*  
M5 19 24 2.5/4  
M5 21 24 2.5/4 \*  
L4 16 21 4.0/6  
M5 17 23 4.0/6

TOYOTA

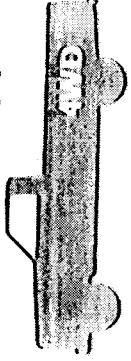
TRUCK 2WD.....

M4 21 23 2.4/4  
M5 21 25 2.4/4  
A4 23 24 2.4/4  
M4 23 26 2.4/4 \*  
M5 22 28 2.4/4  
L4 18 24 3.0/6  
M5 19 24 3.0/6  
L4 18 24 3.0/6  
M5 19 24 3.0/6

1-TON TRUCK  
2WD.....

L4 18 24 3.0/6  
M5 19 24 3.0/6

### 4WD LARGE PICKUPS



CHEVROLET TRANS CITY HWY ENCL

K1500 PICKUP  
4WD.....

A3 16 17 4.3/6  
L4 16 20 4.3/6  
M4C15 17 4.3/6  
M5 15 20 4.3/6  
A3 13 15 5.0/8  
L4 14 18 5.0/8  
M5 14 18 5.0/8  
L4 13 17 5.7/8  
M4C13 14 5.7/8  
M5 13 17 5.7/8  
L4 16 21 6.2/8 D  
M4C17 18 6.2/8 D

K2500 PICKUP  
4WD.....

A3 15 17 4.3/6  
L4 16 20 4.3/6  
M4C15 17 4.3/6  
M5 16 20 4.3/6  
A3 13 14 5.0/8  
L4 14 17 5.0/8  
M5 14 16 5.0/8  
L4 13 16 5.7/8  
M4C13 14 5.7/8  
L4 16 21 6.2/8 D  
M4C17 18 6.2/8 D

S10 PICKUP

4WD.....

L4 17 21 4.3/6  
M5 16 20 4.3/6

DODGE

DAKOTA

PICKUP 4WD.....

L4 15 20 3.9/6  
M5 16 19 3.9/6

POWER RAM 50

4WD.....

L4 16 20 2.4/4  
M5 19 22 2.4/4  
L4 17 20 3.0/6  
M5 17 22 3.0/6

W100/W150

PICKUP 4WD.....

A4 14 15 3.9/6  
M4C13 16 3.9/6  
A4 12 14 5.2/8  
M4C12 13 5.2/8  
A4 11 13 5.9/8  
M4C10 14 5.9/8

W250 PICKUP

4WD.....

A4 11 14 5.2/8  
M4C12 15 5.2/8  
A4 11 13 5.9/8  
M4C10 14 5.9/8

FORD

F150 PICKUP

4WD.....

A3 14 16 4.9/6  
L4 14 18 4.9/6  
M4C15 17 4.9/6  
M5 15 18 4.9/6  
A3 13 15 5.0/8  
L4 13 17 5.0/8  
M4C13 15 5.0/8  
M5 13 16 5.0/8  
L4 11 16 5.8/8

### 4WD LARGE PICKUPS (cont'd)

TRANS CITY HWY ENCL

F250 PICKUP  
4WD.....

M5C14 17 4.9/6  
L4 18 17 50/8  
M4C13 14 50/8  
M5 13 13 50/8  
L4 11 15 58/8

GMC

K1500 SIERRA  
4WD.....

A3 16 17 4.3/6  
L4 16 21 4.3/6  
M4C16 17 4.3/6  
M5 16 20 4.3/6  
A3 13 13 5.0/8  
L4 14 18 5.0/8  
M5 14 18 5.0/8  
L4 13 17 5.7/8  
M4C13 14 5.7/8  
M5 13 17 5.7/8  
L4 16 21 6.2/8 D  
M4C17 18 6.2/8 D

K2500 SIERRA  
4WD.....

A3 15 17 4.3/6  
L4 16 20 4.3/6  
M4C15 17 4.3/6  
M5 16 20 4.3/6  
A3 13 14 5.0/8  
L4 14 17 5.0/8  
M5 14 16 5.0/8  
L4 13 16 5.7/8  
M4C13 14 5.7/8  
M5 12 16 5.7/8  
L4 16 21 6.2/8 D  
M4C17 18 6.2/8 D

S15 PICKUP

4WD.....

L4 17 21 4.3/6  
M5 16 20 4.3/6

ISUZU MOTORS LIMITED

PICKUP 4WD..... M5 16 19 2.6/4

JEEP

COMANCHE

PICK/UP 4WD ...

M4 20 24 2.5/4  
M4 21 24 2.5/4 \*  
M5 19 24 2.5/4  
M5 21 24 2.5/4 \*  
L4 16 20 4.0/6  
M5 17 22 4.0/6

MINI COOPER

TRUCK 4WD.....

L4 18 20 2.4/4  
M5 19 22 2.4/4  
M5 17 22 3.0/6

NISSAN MOTOR COMPANY, LTD.

HARDBODY

4WD.....

M5 19 22 2.4/4  
L4 18 19 3.0/6  
M5 15 19 3.0/6

TOYOTA

TRUCK 4WD.....

L4 18 20 2.4/4  
M5 19 22 2.4/4  
L4 16 20 3.0/6  
M5 15 19 3.0/6

**CARGO VANS**



CHEVROLET	TRANS	CITY	HWY	ENG/CYL
ASTRO 4WD (CARGO)	L4	17	21	4.3/6
ASTRO 2WD (CARGO)	L4	18	25	2.5/4
	M3	21	28	2.5/4
	L4	17	22	4.3/6
G10/20 VAN 2WD	A3	18	18	4.3/6
	L4	17	22	4.3/6
	A3	14	15	5.0/8
	L4	18	20	5.0/8
	L4	18	15	5.7/8
	L4	17	23	6.2/8 D
G30 VAN 2WD	A3	14	14	4.3/6
	L4	18	21	4.3/6
<b>DODGE</b>				
B150/B250 VAN 2WD	A4	15	18	3.9/6
	L3	15	17	3.9/6
	M5	13	16	3.9/6
	A4	12	15	5.2/8
	L3	13	16	5.2/8
	L4	12	17	5.2/8
	A4	12	14	5.9/8
B350 VAN 2WD	A4	13	15	5.2/8
	L4	13	17	5.2/8
	A4	11	14	5.9/8
<b>FORD</b>				
AEROSTAR VAN	L4	17	23	3.0/6
	M5	17	23	3.0/6
E150 ECONOLINE 2WD	A3	14	15	4.9/6
	L4	15	18	4.9/6
	L4	13	17	5.0/8
	L4	11	13	5.8/8
E250 ECONOLINE 2WD	A3	14	15	4.9/6
	L4	14	17	4.9/6
	L4	13	16	5.0/8
	L4	11	15	5.8/8
<b>GMC</b>				
G15/25 VANDURA 2WD	A3	16	18	4.3/6
	L4	17	22	4.3/6
	A3	14	15	5.0/8
	L4	15	20	5.0/8
	L4	15	19	5.7/8
	L4	17	23	6.2/8 D
G35 VANDURA 2WD	A3	14	14	4.3/6
	L4	16	21	4.3/6
SAFARI 4WD (CARGO)	L4	17	21	4.3/6
SAFARI 2WD (CARGO)	L4	18	25	2.5/4

**CARGO VANS (cont'd)**

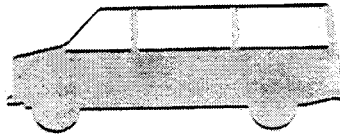
TRANS CITY HWY ENG/CYL

M5 21 26 2.5/4  
L4 17 22 4.3/6

**MITSUBISHI**

VAN..... L4 20 22 2.4/4

**PASSENGER VANS**



CHEVROLET TRANS CITY HWY ENG/CYL

ASTRO 4WD (PASSENGER) ... L4 18 20 4.3/6

ASTRO 2WD (PASSENGER) ... L4 17 22 4.3/6

**G10/20**

SPORTVAN 2WD..... L4 18 21 4.3/6

L4 16 17 5.0/8  
L4 13 17 5.7/8  
L4 18 22 6.2/8 D

**G30 SPORTVAN**

2WD..... L4 13 18 5.7/8

**DODGE**

B150/B250 WAGON 2WD..... A4 15 17 3.9/6

L3 15 17 3.9/6  
M5 13 17 3.9/6  
A4 12 15 5.2/8  
L3 13 16 5.2/8  
L4 13 17 5.2/8  
A4 11 13 5.9/8

**B350 WAGON**

2WD..... A4 12 15 5.2/8  
L4 12 17 5.2/8  
A4 10 13 5.9/8

**FORD**

AEROSTAR WAGON..... L4 16 22 3.0/6

M5 17 22 3.0/6

**E150 CLUB**

WAGON..... L4 14 17 4.9/6  
L4 13 18 5.0/8  
L4 11 15 5.8/8

**GMC**

G15/25 RALLY 2WD..... L4 16 21 4.3/6

L4 14 17 5.0/8  
L4 13 17 5.7/8  
L4 16 22 6.2/8 D

**G35 RALLY**

2WD..... L4 13 18 5.7/8

SAFARI 4WD (PASSENGER) ... L4 16 20 4.3/6

SAFARI 2WD (PASSENGER) ... L4 17 22 4.3/6

**PASSENGER VANS (cont'd)**

TRANS CITY HWY ENG/CYL

**MITSUBISHI**

WAGON..... L4 18 21 2.4/4

**NISSAN MOTOR COMPANY, LTD.**

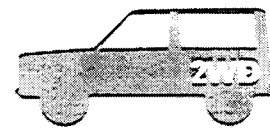
VAN (PASSENGER) L4 17 20 2.4/4  
M5 18 21 2.4/4

**VOLKSWAGEN**

VANAGON SYNORO 4WD ... M50 16 18 2.1/4

VANAGON 2WD. A3 17 18 2.1/4  
M4 18 19 2.1/4

**2WD SPECIAL PURPOSE**



CHEVROLET TRANS CITY HWY ENG/CYL

APV 2WD..... L3 18 23 3.1/6

**R1500**

SUBURBAN 2WD..... L4 18 23 5.7/8

L4 16 23 6.2/8 D

**S10 BLAZER**

2WD..... L4 18 23 4.3/6  
M5 17 23 4.3/6

**CHRYSLER**

TOWN & COUNTRY 2WD.. L4 18 24 3.3/6

**DODGE**

AD150 RAMCHARGER 2WD..... A4 13 18 5.2/8

A4 12 14 5.9/8

**CARAVAN/RAM**

VAN 2WD..... A3 19 23 2.5/4 TP

L3 21 23 2.5/4

M5 18 28 2.5/4 TP

M5 22 28 2.5/4

L3 19 24 3.0/6

L4 18 24 3.0/6

L4 18 24 3.3/6

**FORD**

BRONCO II 2WD L4 17 21 2.9/6  
M5 18 22 2.9/6

**GMC**

R1500 SUBURBAN 2WD..... L4 18 18 5.7/8

L4 16 23 6.2/8 D

**S15 JIMMY**

2WD..... L4 18 23 4.3/6  
M5 17 23 4.3/6

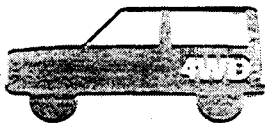
**ISUZU MOTORS LIMITED**

AMIGO 2WD..... M5 19 22 2.3/4  
M5 17 21 2.6/4

## 2WD SPECIAL PURPOSE (cont'd)

	TRANS	CITY	HWY	ENG/CYL
<b>JEEP</b>				
CHEROKEE 2WD	L4	18	24	2.5/4
	M5	18	24	2.5/4
	M5	21	24	2.5/4 *
	L4	18	21	4.0/6
	M5	17	23	4.0/6
<b>MAZDA</b>				
MPV	L4	19	24	2.6/4
	M5	20	24	2.6/4
	L4	17	22	3.0/6
	M5	16	22	3.0/6
<b>NISSAN MOTOR COMPANY, LTD.</b>				
AXXESS	L4	20	24	2.4/4
	M5	21	27	2.4/4
<b>PATHFINDER</b>				
2WD	L4	18	19	3.0/6
	M5	15	19	3.0/6
<b>OLDSMOBILE</b>				
SILHOUETTE				
2WD	L3	18	23	3.1/6
<b>PLYMOUTH</b>				
VOYAGER 2WD	A3	19	23	2.5/4 TP
	L3	21	23	2.5/4
	M5	18	25	2.5/4 TP
	M5	22	23	2.5/4
	L3	19	24	3.0/6
	L4	19	24	3.0/6
	L4	18	24	3.3/6
<b>PONTIAC</b>				
TRANS SPORT				
2WD	L3	18	23	3.1/6
<b>SUZUKI</b>				
SIDEKICK 2WD	M5	27	29	1.6/4
<b>TOYOTA</b>				
4-RUNNER 2WD	A4	18	20	2.4/4
	L4	18	20	3.0/6

## 4WD SPECIAL PURPOSE



	TRANS	CITY	HWY	ENG/CYL
<b>CHEVROLET</b>				
S10 BLAZER				
4WD	L4	17	21	4.3/6
	M5	16	20	4.3/6
<b>V1500 BLAZER</b>				
4WD	L4	13	16	5.7/8
	M4C12	14	14	5.7/8
	L4	18	21	6.2/8 D
<b>V1500 SUBURBAN</b>				
4WD	L4	12	16	5.7/8
	M4C12	14	14	5.7/8
	L4	15	20	6.2/8 D
<b>DAIHATSU MOTOR CO LTD</b>				
DAIHATSU 4WD	M5	23	23	1.6/4

## 4WD SPECIAL PURPOSE (cont'd)

	TRANS	CITY	HWY	ENG/CYL
<b>DODGE</b>				
AW150				
RAMCHARGER				
4WD	A4	11	14	5.2/8
	M4C12	15	15	5.2/8
	A4	11	13	5.9/8
	M4C10	14	14	5.9/8
<b>COLT VISTA</b>				
4WD	M5	19	25	2.0/4
<b>COLT WAGON</b>				
4WD	M5	23	28	1.8/4
<b>RAIDER 4WD</b>				
	M5	16	19	2.6/4
	L4	16	18	3.0/6
	M5	16	19	3.0/6
<b>FORD</b>				
BRONCO II 4WD	L4	16	21	2.9/6
	M5	17	22	2.9/6
<b>BRONCO 4WD</b>				
	L4	14	17	4.9/6
	M5	14	18	4.9/6
	A3	12	13	5.0/8
	L4	13	17	5.0/8
	M5	13	16	5.0/8
	L4	11	15	5.8/8
<b>Geo</b>				
TRACKER				
CONVERTIBLE				
4WD	L3	24	25	1.6/4
	M5	26	28	1.6/4
<b>TRACKER 4WD</b>				
	L3	24	25	1.6/4
	M5	26	28	1.6/4
<b>GMC</b>				
S15 JIMMY				
4WD	L4	17	21	4.3/6
	M5	16	20	4.3/6
<b>V1500 JIMMY</b>				
4WD	L4	13	15	5.7/8
	M4C12	14	14	5.7/8
	L4	16	21	6.2/8 D
<b>V1500 SUBURBAN</b>				
4WD	L4	12	15	5.7/8
	M4C12	14	14	5.7/8
	L4	16	20	6.2/8 D
<b>ISUZU MOTORS LIMITED</b>				
AMIGO 4WD	M5	16	19	2.6/4
<b>TROOPER</b>				
	L4	15	18	2.6/4
	M5	16	18	2.6/4
	L4	15	18	2.8/6
	M5	15	18	2.8/6
<b>JEEP</b>				
CHEROKEE 4WD	L4	18	23	2.5/4
	M5	19	24	2.5/4
	M5	21	24	2.5/4 *
	L4	16	20	4.0/6
	M5	17	22	4.0/6
<b>GRAND WAGONEER</b>				
4WD	A3	11	13	5.9/8
<b>WAGONEER</b>				
4WD	L4	16	20	4.0/6

## 4WD SPECIAL PURPOSE (cont'd)

	TRANS	CITY	HWY	ENG/CYL
<b>WRANGLER</b>				
4WD	M5	18	20	2.5/4
	M5	18	20	2.5/4
	A3	15	16	4.2/6
	M5	16	20	4.2/6
<b>LAND ROVER LTD</b>				
RANGE ROVER	L4	13	16	3.9/8 P
<b>MAZDA</b>				
MPV 4X4	L4	16	20	3.0/6
	M5	16	20	3.0/6
<b>MITSUBISHI</b>				
MONTERO	M5	18	19	2.6/4
	L4	16	18	3.0/6
	M5	16	19	3.0/6
<b>NISSAN MOTOR COMPANY, LTD.</b>				
AXXESS AWD	L4	18	22	2.4/4
	M5	19	23	2.4/4
<b>PATHFINDER</b>				
4WD	L4	15	18	3.0/6
	M5	15	19	3.0/6
<b>PLYMOUTH</b>				
COLT VISTA				
4WD	M5	19	25	2.0/4
<b>COLT WAGON</b>				
4WD	M5	23	28	1.8/4
<b>SUBARU</b>				
LOYALE WAGON				
4WD	A3	22	23	1.8/4
	M5	24	28	1.8/4
<b>LOYALE 4WD</b>				
	A3	22	23	1.8/4
	M5	24	28	1.8/4
<b>SUZUKI</b>				
SAMURAI				
HARDTOP	M5	26	28	1.3/4
<b>SAMURAI SOFT-TOP 4WD</b>				
	M5	28	28	1.3/4
<b>SIDEKICK</b>				
HARDTOP 4WD	L3	24	25	1.6/4
	M5	26	28	1.6/4
<b>SIDEKICK SOFT-TOP 4WD</b>				
	L3	24	25	1.6/4
	M5	26	28	1.6/4
<b>TOYOTA</b>				
LAND CRUISER				
WAGON 4WD	L4	12	14	4.0/6
<b>4-RUNNER 4WD</b>				
	L4	17	19	2.4/4
	M5	18	21	2.4/4
	L4	15	19	3.0/6
	M5	16	19	3.0/6

---

**CAB CHASSIS**

---



---

	TRANS	CITY	HWY	ENG/CYL
<b>BUICK</b>				
<b>COACHBUILDER</b>				
WAGON.....	L4	17	24	5.0/8
<b>CADILLAC</b>				
<b>COMMERCIAL</b>				
CHASSIS.....	L4	16	25	4.5/8 P
<b>CHEVROLET</b>				
<b>S10 CAB</b>				
CHASSIS 2WD...	L3	18	19	2.5/4
<b>DODGE</b>				
<b>DAKOTA CAB</b>				
CHASSIS 2WD...	L4	12	12	3.9/6
	M5	13	17	3.9/6
<b>D250 CAB</b>				
CHASSIS 2WD...	A4	11	13	5.9/8
<b>TOYOTA</b>				
<b>CAB/CHASSIS</b>				
2WD.....	L4	11	11	3.0/6
	M5	12	12	3.0/6

---

INDEX

MANUFACTURER CAR/TRUCK LINE	PASSENGER/CARGO VOLUMES			PAGE
	2-Door	4-Door	Hatch	
<b>ACURA</b>				
INTEGRA		85/11	79/16	4
LEGEND	86/15	95/14		5
<b>ALFA ROMEO</b>				
SPIDER				4
<b>ASC INC.</b>				
ASC GRAND PRIX TURBO	95/15			6
<b>AUDI</b>				
COUPE QUATTRO			75/14	4
V8		84/17		6
100		84/17		6
100 QUATTRO		84/17		6
200		84/17		6
200 QUATTRO		84/17		6
200 QUATTRO WAGON		85/37		7
80		86/10		4
80 QUATTRO		86/8		4
90		86/10		4
90 QUATTRO 20V		86/8		4
<b>BMW</b>				
M3	81/12			4
325i CONVERTIBLE	76/9			4
325i/325is	81/12	81/12		4
325ix	81/12	81/12		4
525i		91/13		5
535i		91/13		5
735i		101/13		6
735il		106/13		6
750il		106/13		6
<b>BUICK</b>				
CENTURY	97/16	98/16		6
CENTURY WAGON		97/42		7
COACHBUILDER WAGON				12
ELECTRA/PARK AVENUE		111/16		7
LESABRE	102/16	107/16		7
LESABRE/ELECTRA WAGON		110/51		8
REGAL				4
REGAL	95/16	101/16		6
RIVIERA	99/14			6
SKYLARK	91/13	89/13		5
<b>CADILLAC</b>				
ALLANTE				4
BROUGHAM		110/19		7
COMMERCIAL CHASSIS				12
ELDORADO	99/14			6
FLEETWOOD/DEVILLE	106/16	114/16		7
SEVILLE		98/14		6
<b>CHEVROLET</b>				
APV 2WD				10
ASTRO AWD (CARGO)				10
ASTRO AWD (PASSENGER)				10
ASTRO 2WD (CARGO)				10
ASTRO 2WD (PASSENGER)				10
BERETTA	92/14			5
CAMARO	82/5		85/12	4
CAPRICE		110/20		7
CAPRICE WAGON		110/50		8
CAVALIER	84/13	89/14		5
CAVALIER WAGON		89/34		7
CELEBRITY WAGON		98/42		6
CORSICA		95/14	95/22	7
CORVETTE				4
C1500 PICKUP 2WD				8
C2500 PICKUP 2WD				8
G10/20 SPORTVAN 2WD				10
G10/20 VAN 2WD				10
G30 SPORTVAN 2WD				10
G30 VAN 2WD				10
K1500 PICKUP 4WD				9
K2500 PICKUP 4WD				9
LUMINA	95/15	101/15		6
R1500 SUBURBAN 2WD				10
S10 BLAZER 2WD				10
S10 BLAZER 4WD				11
S10 CAB CHASSIS 2WD				12
V1500 BLAZER 4WD				11
V1500 SUBURBAN 4WD				11
<b>CHRYSLER</b>				
LEBARON		89/14		4
LEBARON CONVERTIBLE	84/10			4
NEW YORKER		100/16		7
NEW YORKER FIFTH AVENUE IMPERIAL		104/17		7
TC BY MASERATI CONVERTIBLE				4
TOWN & COUNTRY 2WD				10
<b>DAIHATSU MOTOR CO LTD</b>				
DAIHATSU 4WD				11
<b>DAIHATSU MOTOR CO.,LTD</b>				
CHARADE		80/10	79/15	4

MANUFACTURER CAR/TRUCK LINE	PASSENGER/CARGO VOLUMES			PAGE
	2-Door	4-Door	Hatch	
<b>DODGE</b>				
AD150 RAMCHARGER 2WD				10
AW150 RAMCHARGER 4WD				11
B150/B250 VAN 2WD				10
B150/B250 WAGON 2WD				10
B350 VAN 2WD				10
B350 WAGON 2WD				10
CARAVAN/RAM VAN 2WD				10
COLT			84/12	4
COLT VISTA		89/39		7
COLT VISTA 4WD				11
COLT WAGON		83/28		7
COLT WAGON 4WD				11
DAKOTA CAB CHASSIS 2WD				12
DAKOTA PICKUP 2WD				8
DAKOTA PICKUP 4WD				8
DAYTONA			81/17	4
DYNASTY		99/16		6
D100/D150 PICKUP 2WD				8
D250 CAB CHASSIS 2WD				12
D250 PICKUP 2WD				8
MONACO		104/17		7
OMNI			84/15	4
POWER RAM 50 4WD				9
RAIDER 4WD				11
RAM 50 2WD				8
SHADOW			89/13	5
SPIRIT		87/14		6
W100/W150 PICKUP 4WD				9
W250 PICKUP 4WD				9
<b>EAGLE</b>				
PREMIER		105/17		7
SUMMIT		90/10		5
TALON			81/19	4
<b>FERRARI</b>				
TESTAROSSA				4
<b>FORD</b>				
AEROSTAR VAN				10
AEROSTAR WAGON				10
BRONCO II 2WD				10
BRONCO II 4WD				11
BRONCO 4WD				11
ESCORT			85/18	5
ESCORT WAGON		86/28		7
E150 CLUB WAGON				10
E150 ECONOLINE 2WD				10
E250 ECONOLINE 2WD				10
FESTIVA			87/12	4
F150 PICKUP 2WD				8
F150 PICKUP 4WD				9
F250 PICKUP 2WD				9
F250 PICKUP 4WD				9
LTD CROWN VICTORIA		111/22		7
LTD CROWN VICTORIA WAGON		112/53		8
MUSTANG	82/08		83/12	4
PROBE			91/12	5
RANGER PICKUP 2WD				8
RANGER PICKUP 4WD				8
TAURUS		100/17		6
TAURUS WAGON		100/46		7
TAURUS WAGON V6 A/C		100/46		7
TEMPO	90/13	89/13		5
THUNDERBIRD	101/15			6
<b>Geo</b>				
METRO			82/10	4
METRO LSI			82/10	4
METRO XFI			79/10	4
PRIZM		83/11	82/17	4
STORM	78/11			4
TRACKER CONVERTIBLE 4WD				11
TRACKER 4WD				11
<b>GMC</b>				
C1500 SIERRA 2WD				9
C2500 SIERRA 2WD				9
G15/25 RALLY 2WD				10
G15/25 VANDURA 2WD				10
G35 RALLY 2WD				10
G35 VANDURA 2WD				10
K1500 SIERRA 4WD				9
K2500 SIERRA 4WD				9
R1500 SUBURBAN 2WD				10
SAFARI AWD (CARGO)				10
SAFARI AWD (PASSENGER)				10
SAFARI 2WD (CARGO)				10
SAFARI 2WD (PASSENGER)				10
S15 JIMMY 2WD				10
S15 JIMMY 4WD				11
S15 PICKUP 2WD				8
S15 PICKUP 4WD				9



INDEX

MANUFACTURER CAR/TRUCK LINE	PASSENGER/CARGO VOLUMES			PAGE
	2-Door	4-Door	Hatch	
V1500 JIMMY 4WD.....				11
V1500 SUBURBAN 4WD.....				11
<b>HONDA</b>				
ACCORD.....	90/14	93/14		5
CIVIC.....		88/12	85/12	4
CIVIC CRX.....				4
CIVIC CRX HF.....				4
CIVIC WAGON.....		89/27		7
CIVIC WAGON 4WD.....		89/27		7
<b>HYUNDAI MOTOR COMPANY</b>				
EXCEL.....	80/9	85/11	86/12	4
PRECIS.....	80/9	85/11	86/12	4
SONATA.....		100/14		6
<b>INFINITI</b>				
M30.....	80/12			4
Q45.....		95/15		6
<b>ISUZU MOTORS LIMITED</b>				
AMIGO 2WD.....				10
AMIGO 4WD.....				11
IMPULSE.....	80/11			4
PICKUP 2WD.....				8
PICKUP 2WD 1 TON.....				9
PICKUP 4WD.....				9
STYLUS.....		89/11		5
TROOPER.....				11
<b>JAGUAR</b>				
JAGUAR.....		93/13		5
<b>JEEP</b>				
CHEROKEE 2WD.....				11
CHEROKEE 4WD.....				11
COMANCHE PICK/UP 2WD.....				9
COMANCHE PICK/UP 4WD.....				9
GRAND WAGONEER 4WD.....				11
WAGONEER 4WD.....				11
WRANGLER 4WD.....				11
<b>LAMBORGHINI</b>				
COUNTACH.....				4
<b>LAND ROVER LTD</b>				
RANGE ROVER.....				11
<b>LEXUS</b>				
ES250.....		87/13		5
LS400.....		98/14		6
<b>LINCOLN-MERCURY</b>				
CONTINENTAL.....		104/19		7
COUGAR.....	102/15			6
GRAND MARQUIS.....		111/22		7
GRAND MARQUIS WAGON.....		112/53		8
MARK VII.....	97/14			7
SABLE.....		100/19		6
SABLE WAGON.....		100/46		8
SABLE WAGON V6 A/C.....		100/46		8
TOPAZ.....	90/13	90/13		5
TOWN CAR.....		118/22		7
<b>LOTUS</b>				
LOTUS ESPRIT TURBO.....				4
<b>MASERATI</b>				
KARIF.....				4
SPYDER.....				4
222E.....	70/07			4
228.....	109/16			6
430.....		72/14		5
<b>MAZDA</b>				
MAZDA RX-7.....				4
MPV.....				11
MPV 4X4.....				11
MX-5 MIATA.....				4
323/323 PROTEGE.....		92/13	92/16	5
626/MX-6.....	93/14	100/15	95/21	6
929.....		99/15		6
<b>MITSUBISHI</b>				
ECLIPSE.....			81/19	5
GALANT.....		84/11		6
MIRAGE.....		90/10	84/12	5
MIRAGE WAGON.....		83/28		7
MONTERO.....				11
SIGMA.....		88/12		6
SPACE WAGON.....		89/39		7
TRUCK 2WD.....				8
TRUCK 4WD.....				9
VAN.....				9
WAGON.....				10
<b>NISSAN MOTOR COMPANY, LTD.</b>				
AXCESS.....				11
AXCESS AWD.....				11
HARDBODY 2WD.....				8
HARDBODY 4WD.....				9
MAXIMA.....		96/14		6
PATHFINDER 2WD.....				11
PATHFINDER 4WD.....				11

MANUFACTURER CAR/TRUCK LINE	PASSENGER/CARGO VOLUMES			PAGE
	2-Door	4-Door	Hatch	
PULSAR NX.....	79/7			5
SENTRA.....	87/12	88/12		5
SENTRA COUPE.....			72/16	5
SENTRA WAGON.....		91/24		7
STANZA.....		91/14		6
VAN(PASSENGER).....				10
240SX.....	71/9		71/14	4
300ZX.....			49/23	4
300ZX 22.....			75/12	5
<b>OLDSMOBILE</b>				
CUSTOM CRUISER.....		110/50		8
CUTLASS CALAIS.....	91/13	90/13		6
CUTLASS CIERA.....	97/16	97/16		6
CUTLASS CRUISER.....		97/42		8
CUTLASS SUPREME.....	98/14	100/15		7
EIGHTY-EIGHT.....	102/16	108/16		7
NINETY-EIGHT/TOURING.....		111/16		7
SILHOUETTE 2WD.....				11
TROFEO/TORONADO.....	99/14			7
<b>PEUGEOT</b>				
405 SEDAN.....		91/14		6
405 STATION WAGON.....		95/38		8
505 STATION WAGON.....		93/54		8
<b>PLYMOUTH</b>				
ACCLAIM.....		97/14		7
COLT.....			84/12	5
COLT VISTA.....		89/39		7
COLT VISTA 4WD.....				11
COLT WAGON.....		83/28		7
COLT WAGON 4WD.....				11
HORIZON.....			84/15	5
LASER.....			81/10	5
SUNDANCE.....			89/13	6
VOYAGER 2WD.....				11
<b>PONTIAC</b>				
BONNEVILLE.....		108/15		7
FIREBIRD/TRANS AM.....			85/12	5
GRAND AM.....	91/13	90/13		6
GRAND PRIX.....	95/15	100/16		7
LEMANS.....		89/17	89/19	6
SUNBIRD.....	84/13	89/13		6
SUNBIRD CONVERTIBLE.....	78/10			5
TRANS SPORT 2WD.....				11
8000.....		97/16		7
8000 WAGON.....		97/42		8
<b>PORSCHE</b>				
911 CARRERA 4/2.....	55/4			4
928 S4.....			74/8	4
944 S2.....			63/12	4
<b>ROLLS-ROYCE MOTOR CARS LTD.</b>				
BENTLEY CONTINENTAL.....	84/10			5
BENTLEY EIGHT/BENTLEY.....				
MULSAN.....		98/12		7
CORNICHE III.....	84/10			5
SILVER SPIRIT II/SILVER SPUR.....		98/12		7
<b>SAAB</b>				
SAAB 900.....		89/14	88/22	6
SAAB 900 CONVERTIBLE.....	76/10			5
SAAB 9000.....		103/18	103/24	7
<b>SUBARU</b>				
JUSTY.....			79/10	5
JUSTY 4WD.....			79/10	5
LEGACY.....		90/14		6
LEGACY WAGON.....		92/36		7
LEGACY WAGON 4WD.....		92/36		6
LEGACY 4WD.....		90/14		7
LOYALE.....		88/15	83/19	6
LOYALE WAGON.....		88/35		7
LOYALE WAGON 4WD.....				11
LOYALE WAGON 4WD TURBO.....		88/35		7
LOYALE 4WD.....				11
LOYALE 4WD TURBO.....		88/15	83/19	6
XT.....	76/10			5
XT 4WD.....	76/10			5
<b>SUZUKI</b>				
SAMURAI HARDTOP.....				11
SAMURAI SOFT-TOP 4WD.....				11
SIDEKICK HARDTOP 4WD.....				11
SIDEKICK SOFT-TOP 4WD.....				11
SIDEKICK 2WD.....				11
SWIFT.....			82/10	5
SWIFT GT.....			79/10	5
<b>TOYOTA</b>				
CAB/CHASSIS 2WD.....				12
CAMRY.....		89/12		6
CAMRY WAGON.....		90/34		7
CELICA.....	75/10		74/13	5
COROLLA.....	76/12	84/11		5
COROLLA ALL-TRAC WAGON.....		87/26		7

INDEX

MANUFACTURER CAR/TRUCK LINE	PASSENGER/CARGO VOLUMES			PAGE
	2-Door	4-Door	Hatch	
COROLLA WAGON.....		88/31		7
CRESSIDA.....		89/12		6
LAND CRUISER WAGON 4WD.....				11
SUPRA.....			74/11	5
TERCEL.....	78/11		80/13	5
TRUCK 2WD.....				9
TRUCK 4WD.....				9
1-TON TRUCK 2WD.....				9
4-RUNNER 2WD.....				11
4-RUNNER 4WD.....				11
<b>VOLKSWAGEN</b>				
CABRIOLET.....	77/ 6			4
CORRADO.....			80/18	5
FOX.....	78/10	77/10		5
FOX WAGON.....	78/33			7
GOLF/GTI.....			87/18	6
GTI 16V.....			87/18	6
JETTA.....	88/17	87/17		6
JETTA GLI 16V.....		87/17		6
PASSAT.....		96/14		7
PASSAT WAGON.....		99/34		8
VANAGON SYNCRO 4WD.....				10
VANAGON 2WD.....				10
<b>VOLVO</b>				
240.....		90/14		6
240 WAGON.....			91/42	4
740.....		94/17		7
740 WAGON.....			95/39	8
740 16-VALVE.....		94/17		7
740 16-VALVE WAGON.....			95/39	8
780.....		94/17		7
780 WAGON.....			95/39	8
780.....	90/15			6

**Sample Fuel Economy Label  
(Attached to New Auto Window)**

This is the average estimate for city driving

Use these two estimates to compare to other models

This is the average estimate for highway driving

Compare this vehicle to others in the **FREE GAS MILEAGE GUIDE** available at the dealer.

**CITY MPG**

**HIGHWAY MPG**

These numbers represent a range of fuel economy that most drivers achieve with this particular model

Actual Mileage will vary with options, driving conditions, driving habits and vehicle's condition. Results reported to EPA indicate that the majority of vehicles with these estimates will achieve between

**13 and 18** mpg in the city, and between **21 and 28** mpg on the highway.

**1990 CANARY 2.8 LITER V6 ENGINE 2 BBL CARB MAN 4 SPD TRANS CATALYST, FEEDBACK FUEL**

Estimated Annual Fuel Cost: **\$942**

For Comparison Shopping, all vehicles classified as **COMPACT** have been issued mileage ratings ranging from **15 to 22** mpg city and **22 to 31** mpg highway.

These numbers represent the range of fuel economy for other models of this size class

This fuel cost is based on 15,000 mi/yr at \$1.20